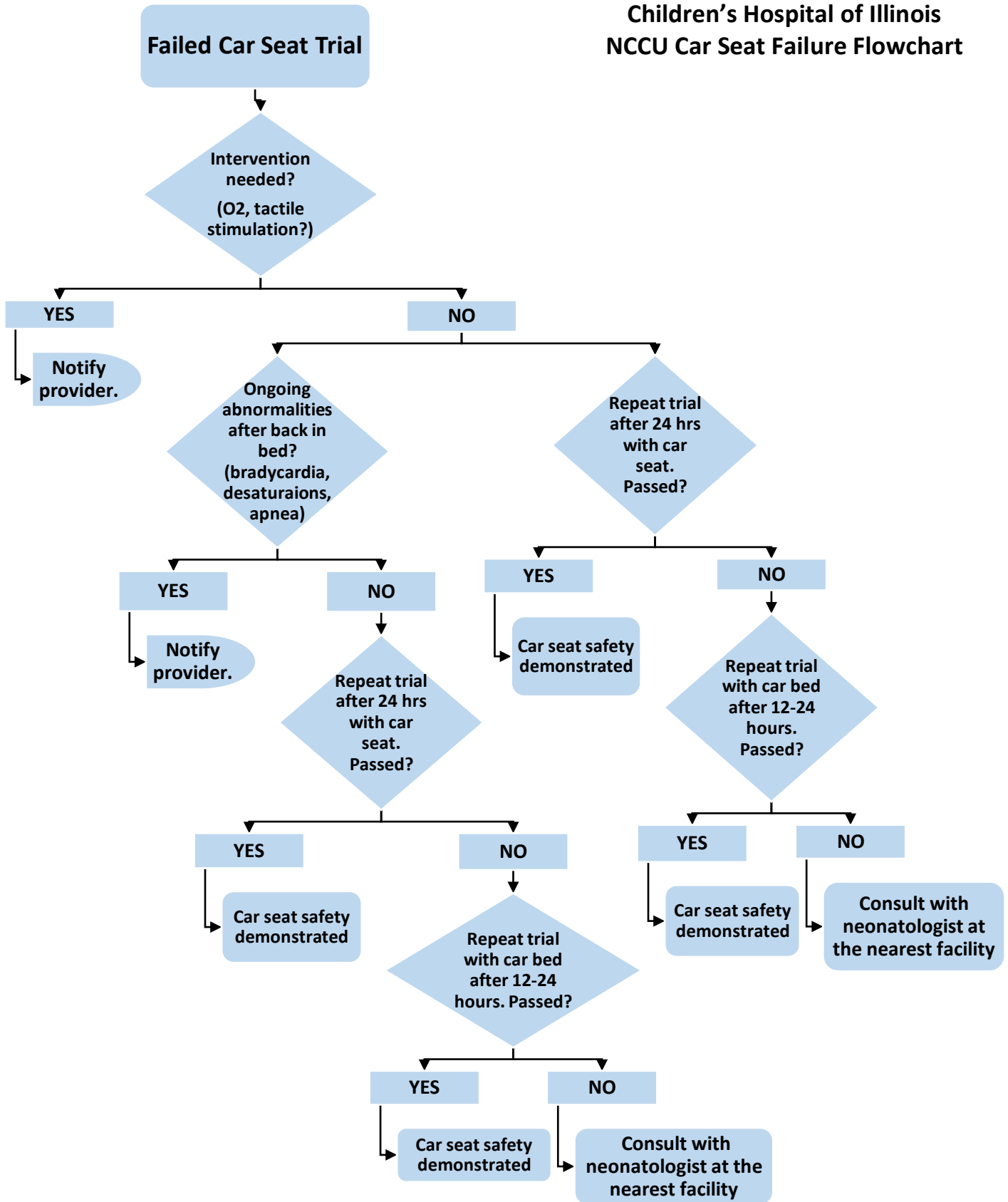


Children's Hospital of Illinois  
NCCU Car Seat Failure Flowchart



If you have any questions regarding this flowchart, contact:  
Viola Albert, Infant Apnea Monitoring Nurse, Children's Hospital of Illinois, OSF Saint Francis Medical Center, Peoria, IL.  
Phone: 309-624-6134/ Email: [viola.l.albert@osfhealthcare.org](mailto:viola.l.albert@osfhealthcare.org)